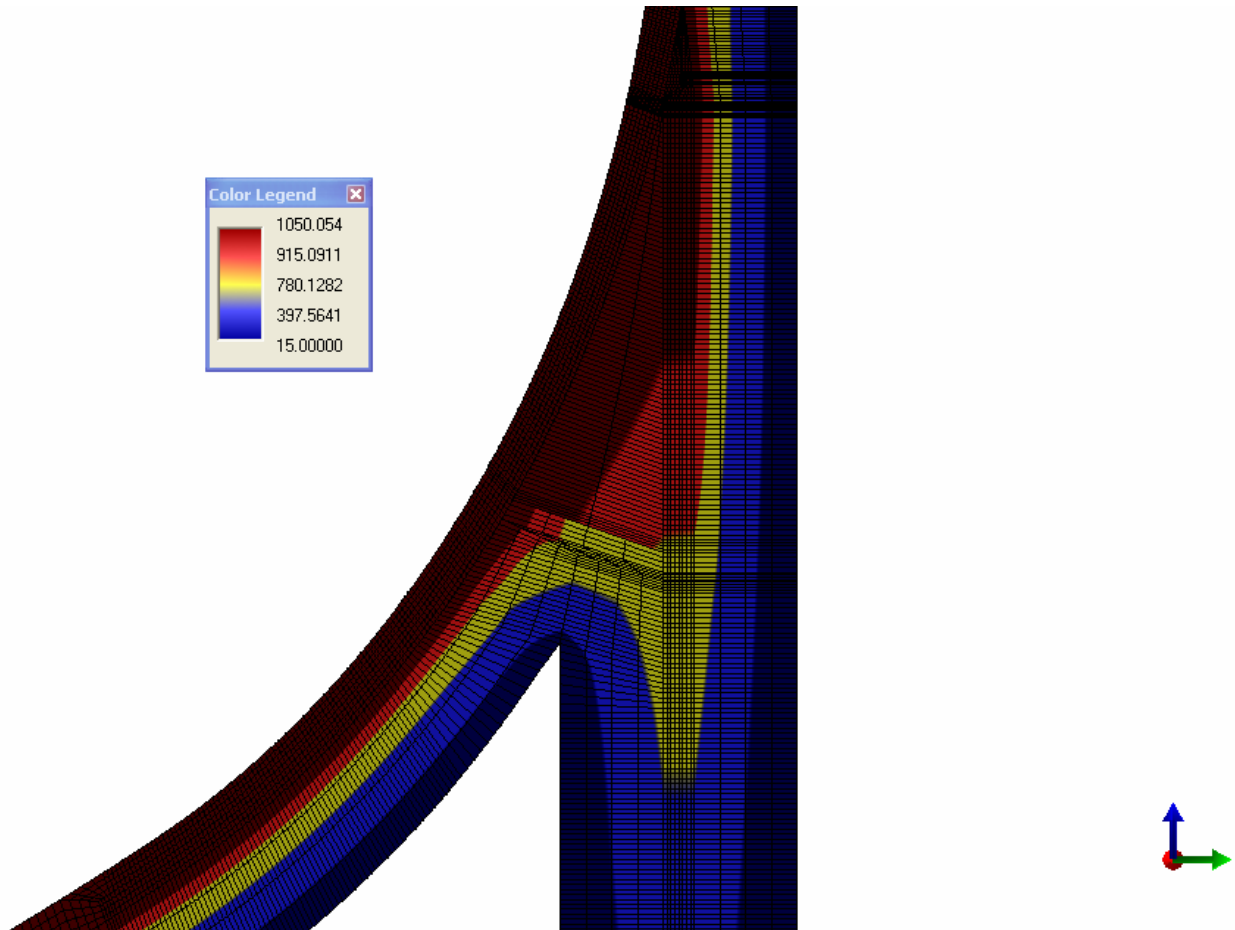


“Hot Box” Thermal Stress Analysis



Finite element analysis (FEA) of fractionator column “hot box”. Analysis included establishing thermal gradient (1050 F inside to 15 F outside) through the vessel and then analyzed the skirt-bottom head-vessel shell junction for a variety of conditions including wind load, gravity load, thermal, and internal and external pressure. Stress combinations per Appendix 4 of ASME Section VIII, Div. 2 were used.

Highlander

Highlander Engineering Services, PLLC
182 County Route 44
Argyle, NY 12809

Phone: +1.518.638.6280
Email: info@highlandereng.com

*Serving Our Clients
with Skilled Engineering*